

LSCB Survey 2015 Results and Analysis

Conclusions & Overview

- Generally respondents felt there were good organisational arrangements for safeguarding, felt confident in raising concerns and that these would be recognised and dealt with appropriately by their agencies
- Practitioners generally felt confident in dealing with the more common issues (child protection, neglect, alcohol and drug misuse) but not with less common ones such as FGM and FMHBV
- Concerns about lack of resources or inadequate staffing were frequently raised across all agencies
- Awareness of the role of the LSCB seems to be an issue across most agencies, especially Health Providers
- Frequency and quality of supervision generally scored low across agencies
- Response rates from Health Commissioning, Colleges, CRC, District Councils and CAFCASS were very low which reduces the validity of results for these agencies
- Generally there were less positive responses than in the previous survey conducted in 2012
- There was no relationship between positivity of responses and length of service
- The most common themes from comments were concerns about lack of resources / cuts to services and the need for better information sharing

In Depth Analysis

Number of responses by agency:

Agency	2015, Number of Respondents	2012, Number of Respondents
CAFCASS	5	13
College / FE Provider	1	N/A
CRC / Probation	4	30
District Council	7	N/A
Health Commissioners	3	42
Health Providers	294	56
LCC	181	346
Police	44	18
Schools	67	N/A
VCFS	41	90
Other	34	83
Total	681	702

Generally the total response rate was similar to the previous survey. The biggest change is the significant reduction in LCC responses and huge increase in Health Provider responses.

Top 5 questions by % positive responses

Question	% Positive
Any safeguarding concerns I raise will be taken seriously	97.5
I know how to report serious safeguarding concerns should they arise	96.5
(In the agency I work for) Effective safeguarding policies are in place	95.8
How confident, if at all, do you personally feel about addressing these issues during your day-to-day practice : Child Protection	93.3
How effective, if at all, do you feel your organisation is in addressing concerns around the following issues : Child Protection	92.8

Bottom 5 questions by % positive responses

Question	% Positive
How confident, if at all, do you personally feel about addressing these issues during your day-to-day practice : FGM	41.2
I know who my agency representative(s) is on the LSCB Board	44.6
How effective, if at all, do you feel your organisation is in addressing concerns around the following issues : FGM	45.2
How confident, if at all, do you personally feel about addressing these issues during your day-to-day practice : FM&HBV	45.2
How effective, if at all, do you feel your organisation is in addressing concerns around the following issues : FM&HBV	51.7

Comments

Most common themes:

- Lack of resources / impact of cuts
- Improved communication / information sharing between agencies
- Better education for young people on safeguarding issues / healthy relationships
- More / better access to multi-agency training
- Listening to wishes of children / voice of the child
- Over-focus on gathering evidence for inspection

Rank order of Questions by Positive Response with Direction of Travel Since 2012

(Questions related directly to the operations of the LSCB are in *italics*)

Rank	Question	% Positive 2015	% Positive 2012	DoT
1.	Any safeguarding concerns I raise will be taken seriously	97.5	98	No Sig Change
2.	I know how to report serious safeguarding concerns should they arise	96.5	99	No Sig Change
3.	(In the agency I work for) Effective safeguarding policies are in place	95.8	98	No Sig Change
4.	How confident, if at all, do you personally feel about addressing these issues during your day-to-day practice : Child Protection	94.4	96	No Sig Change
5.	How effective, if at all, do you feel your organisation is in addressing concerns around the following issues : Child Protection	93.9	98	No Sig Change
6.	(In the agency I work for) Effective safeguarding policies are accessible	92.5	97	No Sig Change
7.	How confident, if at all, do you personally feel about addressing these issues during your day-to-day practice : Neglect	91.5	93	No Sig Change
8.	How much has learning from the following LSCB activities informed your practice: Serious Case Reviews (SCRs)	91.4	N/A	N/A
9.	My agency works well to safeguard children	91.0	97	No Sig Change

Rank	Question	% Positive 2015	% Positive 2012	DoT
10	How effective, if at all, do you feel your organisation is in addressing concerns around the following issues : Neglect	89.4	91	No Sig Change
11	I have positive working relationships with professionals from other agencies	88.7	93	No Sig Change
12	I feel confident in sharing information with other agencies	88.2	94	No Sig Change
13	I feel confident in challenging other professionals about safeguarding issues when it is necessary	88.1	89	No Sig Change
14	How confident, if at all, do you personally feel about addressing these issues during your day-to-day practice : Domestic Abuse	86.0	87	No Sig Change
15	How effective, if at all, do you feel your organisation is in addressing concerns around the following issues : Domestic Abuse	85.2	87	No Sig Change
16	How confident, if at all, do you personally feel about addressing these issues during your day-to-day practice : Drugs & Alcohol	84.9	89	No Sig Change
17	I receive adequate training to carry out my safeguarding duties effectively	82.6	92	Worse
18	How effective, if at all, do you feel your organisation is in addressing concerns around the following issues : Drugs & Alcohol	82.0	88	No Sig Change
19	<i>How much has learning from the following LSCB activities informed your practice: Multi-agency learning reviews (MALRs)</i>	81.8	N/A	N/A
20	<i>How much has learning from the following LSCB activities informed your practice: Quality Assurance & Audits</i>	80.0	N/A	N/A
21	<i>I know how to access the LSCB multi-agency safeguarding procedures and refer to them as required</i>	79.2	N/A	N/A
22	<i>How much has learning from the following LSCB activities informed your practice: Child Death Reviews (CDOP)</i>	79.1	N/A	N/A
23	<i>Please rate the following LSCB services / functions based on your experience: Training / Learning Events</i>	78.1	N/A	N/A
24	I am given sufficient resources to carry out my safeguarding duties	77.9	86	Worse
25	<i>Please rate the following LSCB services / functions based on your experience: Policies & Procedures</i>	77.5	N/A	N/A
26	How effective, if at all, do you feel your organisation is in addressing concerns around the following issues : Adult Mental Health & Substance Misuse	76.4	76	No Sig Change
27	How confident, if at all, do you personally feel about addressing these issues during your day-to-day practice : Adult Mental Health & Substance Misuse	76.2	76	No Sig Change
28	How effective, if at all, do you feel your organisation is in addressing concerns around the following issues : CSE	75.7	77	No Sig Change
29	<i>I know how to contact the LSCB for information or advice</i>	74.6	N/A	N/A
30	I am given sufficient time to carry out my safeguarding duties	74.0	85	No Sig Change

Rank	Question	% Positive 2015	% Positive 2012	DoT
31	How confident, if at all, do you personally feel about addressing these issues during your day-to-day practice : CSE	72.6	76	No Sig Change
32	How confident, if at all, do you personally feel about addressing these issues during your day-to-day practice : Esafety	72.4	77	No Sig Change
33	How confident, if at all, do you personally feel about addressing these issues during your day-to-day practice : Bullying (between children and young people)	72.1	81	Worse
34	<i>How effective do you think the LSCB is overall</i>	71.5	N/A	N/A
35	<i>Please rate the following LSCB services / functions based on your experience: Elearning</i>	70.7	N/A	N/A
36	How effective, if at all, do you feel your organisation is in addressing concerns around the following issues : Esafety	68.2	74	No Sig Change
37	I feel valued and appreciated by my agency	66.0	82	Worse
38	How effective, if at all, do you feel your organisation is in addressing concerns around the following issues : Allegations against employees and links to the LADO (Local Authority Designated Officer)	63.2	N/A	N/A
39	I receive frequent supervision about safeguarding children from my line manager and/or appropriately trained child protection supervisor	62.8	73	Worse
40	How effective, if at all, do you feel your organisation is in addressing concerns around the following issues : Bullying (between children and young people)	62.7	75	Worse
41	<i>Please rate the following LSCB services / functions based on your experience: Newsletters / communications</i>	61.7	N/A	N/A
42	I receive good quality supervision about safeguarding children from my line manager and/or appropriately trained child protection supervisor	61.7	74	Worse
43	How confident, if at all, do you personally feel about addressing these issues during your day-to-day practice : Allegations against employees and links to the LADO (Local Authority Designated Officer)	61.1	N/A	N/A
44	Staffing levels within my agency are sufficient to ensure safeguarding responsibilities are effectively met	58.3	N/A	N/A
45	<i>Please rate the following LSCB services / functions based on your experience: Safer Sleep Campaign</i>	56.3	N/A	N/A
46	How effective, if at all, do you feel your organisation is in addressing concerns around the following issues : FM&HBV	52.3	N/A	N/A
47	How confident, if at all, do you personally feel about addressing these issues during your day-to-day practice : FM&HBV	45.7	N/A	N/A
48	How effective, if at all, do you feel your organisation is in addressing concerns around the following issues : FGM	45.7	N/A	N/A
49	<i>I know who my agency representative(s) is on the LSCB Board</i>	45.1	N/A	N/A
50	How confident, if at all, do you personally feel about addressing these issues during your day-to-day practice : FGM	41.7	N/A	N/A

In comparison to the previous survey, completed in 2012, almost all questions received less positive responses, in most cases however the difference was less than a few percentage points. There are a number of questions however, where the decline was more significant, particularly in relation to sufficiency of resources, practitioners feeling valued, frequency and quality of supervision and dealing with bullying.

There were a number of new questions particularly in relation to the LSCB services where there is no comparator from the previous survey.

Analysis by Agency

Overall Positive responses (highest to lowest)

Agency	% Positive Responses	Number of Respondents
College / FE Provider	90	1
CRC	84.17	4
CAFCASS	81.63	5
Schools	75.34	67
LCC	74.86	181
Health Providers	74.73	294
VCFS	74.44	41
Health Commissioners	71.33	3
Other	68.16	34
Police	62.07	44
District Council	59.4	7

Of the agencies where there were more than 10 responses, there was little difference in the percentage of positive responses. The Police, however had significantly fewer positive response.

Top 5 / Bottom 5 Questions by Agency (only agencies with more than 10 responses included)

Health Providers

Top 5

Rank	Question	% Positive
1	How effective, if at all, do you feel your organisation is in addressing concerns around the following issues : Child Protection	98.6
2	Any safeguarding concerns I raise will be taken seriously	97.3
3	(In the agency I work for) Effective safeguarding policies are in place	96.6
4	I know how to report serious safeguarding concerns should they arise	95.2
5	(In the agency I work for) Effective safeguarding policies are accessible	94.9

Bottom 5

Rank	Question	% Positive
46	How confident, if at all, do you personally feel about addressing these issues during your day-to-day practice : Allegations against employees and links to the LADO (Local Authority Designated Officer)	52.1
47	Staffing levels within my agency are sufficient to ensure safeguarding responsibilities are effectively met	51.7
48	How confident, if at all, do you personally feel about addressing these issues during your day-to-day practice : FM&HBV	45.7
49	How confident, if at all, do you personally feel about addressing these issues during your day-to-day practice : FGM	43.4
50	I know who my agency representative(s) is on the LSCB Board	42.1

Lancashire County Council

Top 5

Rank	Question	% Positive
1	How effective, if at all, do you feel your organisation is in addressing concerns around the following issues : Child Protection	99.4
2	Any safeguarding concerns I raise will be taken seriously	98.3
3	I know how to report serious safeguarding concerns should they arise	97.2
4	(In the agency I work for) Effective safeguarding policies are in place	95.0
5	My agency works well to safeguard children	94.5

Bottom 5

Rank	Question	% Positive
46	How effective, if at all, do you feel your organisation is in addressing concerns around the following issues : FM&HBV	46.2
47	How confident, if at all, do you personally feel about addressing these issues during your day-to-day practice : FM&HBV	39.9
48	How effective, if at all, do you feel your organisation is in addressing concerns around the following issues : FGM	36.9
49	How confident, if at all, do you personally feel about addressing these issues during your day-to-day practice : FGM	34.6
50	Please rate the following LSCB services / functions based on your experience: Safer Sleep Campaign	33.1

Schools

Top 5

Rank	Question	% Positive
1	I know how to report serious safeguarding concerns should they arise	100.0
2	How confident, if at all, do you personally feel about addressing these issues during your day-to-day practice : Child Protection	100.0
3	How confident, if at all, do you personally feel about addressing these issues during your day-to-day practice : Bullying (between children and young people)	100.0
4	How confident, if at all, do you personally feel about addressing these issues during your day-to-day practice : Esafety	100.0
5	(In the agency I work for) Effective safeguarding policies are in place	98.5

Bottom 5

Rank	Question	% Positive
46	How effective, if at all, do you feel your organisation is in addressing concerns around the following issues : FM&HBV	36.0
47	How confident, if at all, do you personally feel about addressing these issues during your day-to-day practice : FGM	34.5
48	LSCB services / functions based on your experience: Training / Learning Events	34.3
49	How effective, if at all, do you feel your organisation is in addressing concerns around the following issues : FGM	29.4
50	Please rate the following LSCB services / functions based on your experience: Safer Sleep Campaign	22.4

Police

Top 5

Rank	Question	% Positive
Q16	I know how to report serious safeguarding concerns should they arise	97.7
Q8	Any safeguarding concerns I raise will be taken seriously	95.5

Q25a	How confident, if at all, do you personally feel about addressing these issues during your day-to-day practice : Child Protection	93.2
Q25c	How confident, if at all, do you personally feel about addressing these issues during your day-to-day practice : Domestic Abuse	93.0
Q28a	How much has learning from the following LSCB activities informed your practice: Serious Case Reviews (SCRs)	91.7

Bottom 5

Rank	Question	% Positive
46	I am given sufficient resources to carry out my safeguarding duties	27.3
47	How effective, if at all, do you feel your organisation is in addressing concerns around the following issues : Bullying (between children and young people)	26.2
48	I feel valued and appreciated by my agency	25.0
49	Please rate the following LSCB services / functions based on your experience: Elearning	25.0
50	Staffing levels within my agency are sufficient to ensure safeguarding responsibilities are effectively met	11.4

VCFS

Top 5

Rank	Question	% Positive
Q16	I know how to report serious safeguarding concerns should they arise	100.0
Q8	Any safeguarding concerns I raise will be taken seriously	100.0
Q24a	How effective, if at all, do you feel your organisation is in addressing concerns around the following issues : Child Protection	100.0
Q25a	How confident, if at all, do you personally feel about addressing these issues during your day-to-day practice : Child Protection	97.6
Q18	(In the agency I work for) Effective safeguarding policies are accessible	95.1

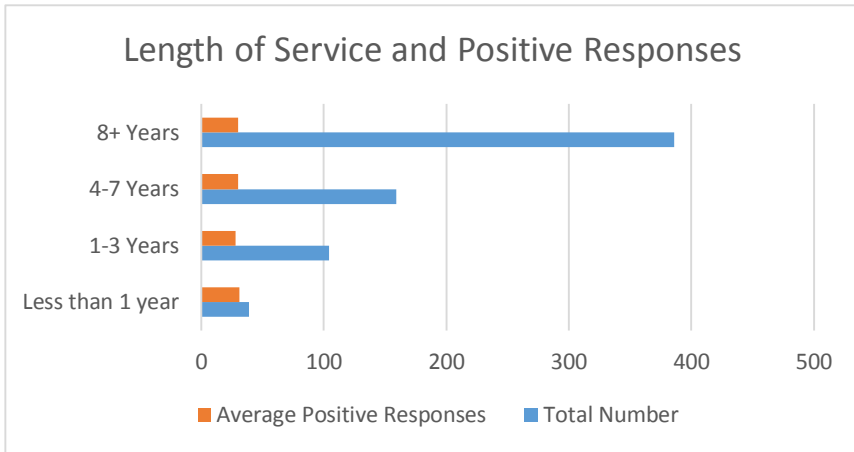
Bottom 5

Rank	Question	% Positive
Q24k	How effective, if at all, do you feel your organisation is in addressing concerns around the following issues : FGM	27.3
Q27e	Please rate the following LSCB services / functions based on your experience: Newsletters / communications	26.2
Q25k	How confident, if at all, do you personally feel about addressing these issues during your day-to-day practice : FGM	25.0
Q27c	Please rate the following LSCB services / functions based on your experience: Policies & Procedures	25.0
Q27d	Please rate the following LSCB services / functions based on your experience: Safer Sleep Campaign	11.4

Note - A full analysis for each agency can be obtained from the interactive spreadsheet at appendix 1

Length of Service

	Number	Average Positive Responses
Less than 1 year	39	30.8
1-3 Years	104	27.7
4-7 Years	159	29.9
8+ Years	386	30.1



It is clear from the chart above that far more respondents had worked for their agency for 8 + years than other categories, though it is not possible to determine if this reflects the demographics of the workforce or whether longer serving practitioners are more likely to respond.

There was no significant difference in mean positive responses between the 4 groups which suggests length of service is not a proxy for overall satisfaction / dissatisfaction.



Author
 Richard Matthews, LSCB Business Coordinator
 May 2015

Appendix 1

Agency Analysis Tool



Agency Analysis Tool

