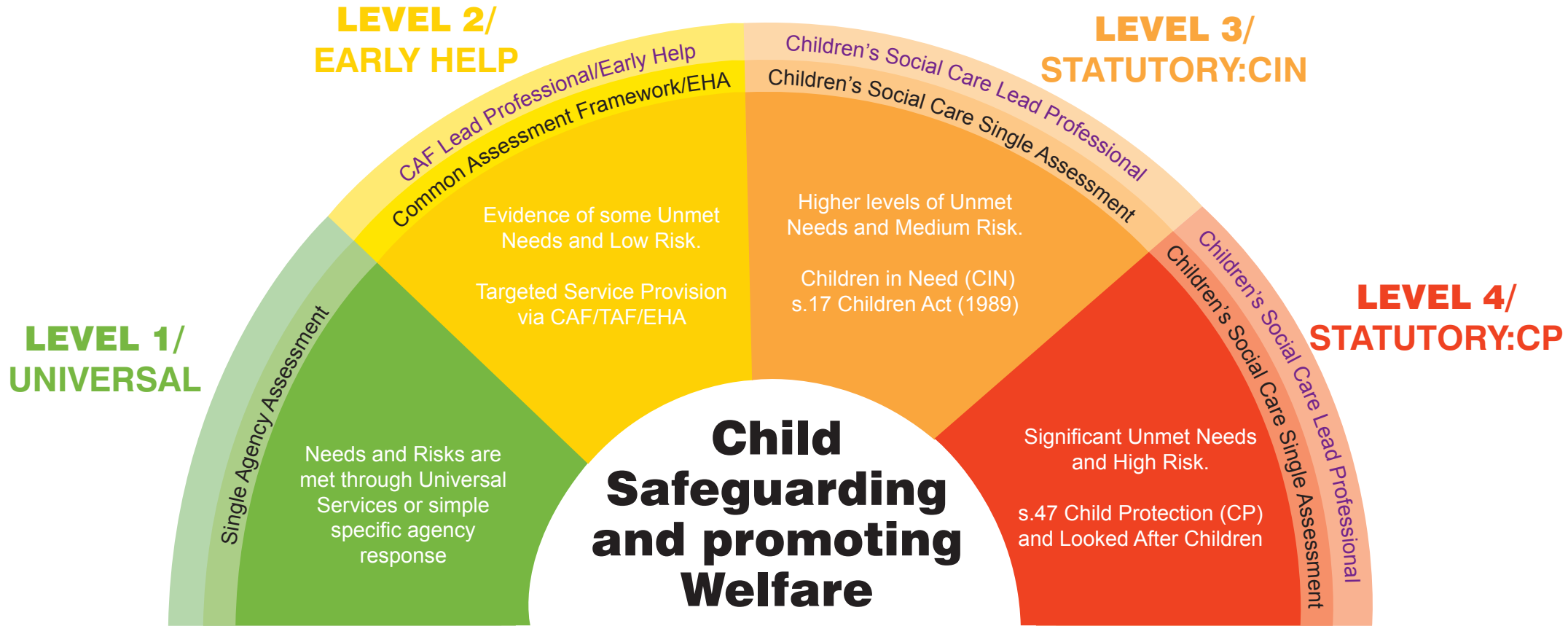


Pan - Lancashire Continuum of Need



Information Sharing

Go straight to Level 4 as soon as risk of significant harm is suspected

If in doubt, consult with agency safeguarding leads, or the Duty Social Worker in your area:
 Lancashire 0300 123 6720; Blackpool 01253 477299; Blackburn with Darwen 01254 666400

